

## APPLICATION

Cover linesets and Drain hoses from unit to wall



INSTALLATION EXAMPLE

## PAINTABLE

Paint manufacturers recommend the use of polyurethane coating to paint PVC & ASA products, their recommendations should be respected. Clean and degrease beforehand. The darker the paint, the more retraction phenomena may occur. We recommend to paint only in light colours. Products that are flexible (PE or PP) are not paintable as their flexibility will not allow paint to remain.

## PRODUCT INFORMATION

### Product Range:

SpeediDuct™

### Product Group:

Ducting & Trunking

Ref	Description
0504.00001.011	SpeediDuct™ 70 L=2m
0504.00101.011	SpeediDuct™ 105 L=2m
0504.00201.012	SpeediDuct™ 150 L=2m

## STANDARD COLORS

White 9002

## FEATURES & BENEFITS

- Made of rigid, shockproof, UV-stabilized fire resistant PVC
- Thanks to the unique rail guide, the Fixation Clip allows you to strap and keep the linesets in place
- Protects the linesets and drain hoses against deterioration due to climatic conditions (uv radiation) and contributes to reducing your energy consumption

## MATERIAL

**Ducts:** UV-resistant PVC

**Fittings:** UV-resistant ASA

**Flex Joint:** UV-resistant PE and PP

## TEMPERATURE RANGE

Between -20°C/-4°F to +60°C/140°F in a static position.

## ACCESSORIES

Description	SpeediDuct™ 70	SpeediDuct™ 105	SpeediDuct™ 150
SpeediDuct™ Wall Cover	0504.00009.015	0504.00109.015	0504.00209.015
SpeediDuct™ Flat Bend 90°	0504.00005.015	0504.00105.015	0504.00205.015
SpeediDuct™ 90° Elbow Bend	0504.00002.015	0504.00102.015	0504.00202.015
SpeediDuct™ 90° Long Flat Bend	0504.00008.015	0504.00108.015	0504.00208.015
SpeediDuct™ Connection Piece	0504.00012.015	0504.00112.015	0504.00212.015
SpeediDuct™ Reducer Joint	N/A	0504.00011.015	0504.00111.016
SpeediDuct™ Flat Rosette	0504.00007.015	0504.00107.015	0504.00207.015
SpeediDuct™ Elbow Bend Corner In 90°	0504.00003.015	0504.00103.015	0504.00203.015
SpeediDuct™ 45° Flat Bend	0504.00004.015	0504.00104.015	0504.00204.015
SpeediDuct™ Duct End	0504.00014.015	0504.00114.015	0504.00214.015
SpeediDuct™ Duct Cap	0504.00013.015	0504.00113.015	0504.00213.015
SpeediDuct™ T-Joint	N/A	0504.00115.015	0504.00215.015
SpeediDuct™ Wall Rosette	0504.00010.015	0504.00110.015	0504.00210.015
SpeediDuct™ Starter Kit	0504.00018.000	0504.00118.000	N/A
SpeediDuct™ Starter Kit XL	0504.00022.000	0504.00122.000	N/A
SpeediDuct™ Flex Hose Kit	0504.00021.072	0504.00121.072	N/A
SpeediDuct™ Adjustable Flat Bend	0504.00016.015	0504.00116.015	N/A
SpeediDuct™ Flex Joint	0504.00006.015*	0504.00106.15*	N/A

\* TEL. for stock - N/A = Not Available

## CHARACTERISTICS OF RIGID PVC

Description	Value	Specifications
Relative Density	1,52	ISO 1183 (Gr/cm <sup>3</sup> )
Softening	ISO 306	
Point (Vicat)	77	5 kg -Celsius
IZOD	> 7	KJ/m <sup>2</sup> ; +23°C (ISO 179)
Tensile strength at yield	40,50	(N/mm <sup>2</sup> ; ISO 527-I)
Tensile strength at break	40	(N/mm <sup>2</sup> ; ISO 527-I)
Elongation at break	160 %	(ISO 527-I)
Elongation at yield	3,0 %	(ISO 527-I)
Elasticity module at bending	3700	(ISO 178)
Flame retardant	94 V0	UL 94

The data given above are typical results from tests done in the laboratory

## CHARACTERISTICS OF ASA

Description	Value	Specifications
Tensile Modulus	2,15	ISO 527
Yield Stress	48	ISO 527
Tensile Strain at Yield	5.0	ISO 527
Tensile Strain at Break	15	ISO 527
Flexular Modulus	2,3	(N/mm <sup>2</sup> ; ISO 527-I)

*The data given above are typical results from tests done in the laboratory*

## CHARACTERISTICS OF PE

Description	Value	Specifications
Density	960	Kg/m <sup>3</sup> (ISO 1872)
Tensile Modulus	1500	MPa (ISO 527)
Tensile Strength at Yield	31	MPa (ISO 527)
Charmpy Impact Strength (23°C)	4,0	kJ/m <sup>2</sup> (ISO 179)

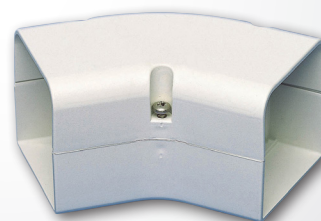
*The data given above are typical results from tests done in the laboratory*

## PICTURES OF ACCESSORIES

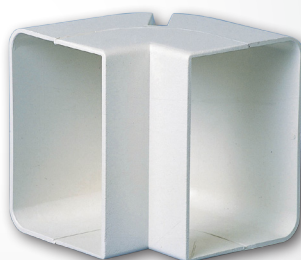
ADJUSTABLE FLAT BEND



45° FLAT BEND



ELBOW BEND 90° CORNER-IN



90° ELBOW BEND



90° LONG FLAT ELBOW



SOFFIT INLET



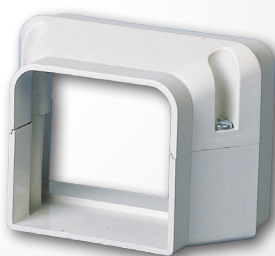
FLAT ROSETTE



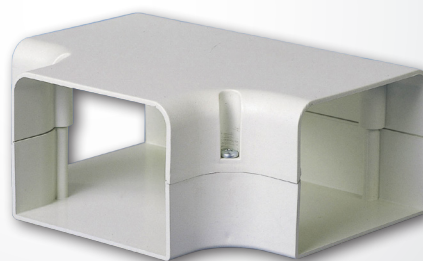
WALL ROSETTE



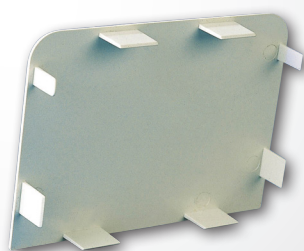
REDUCER JOINT



T-JOINT



DUCT CAP



STARTER KIT

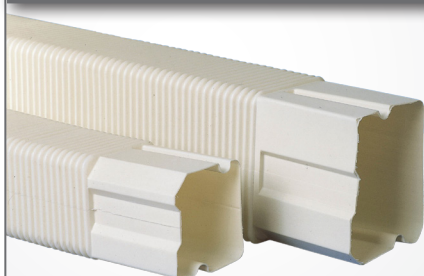




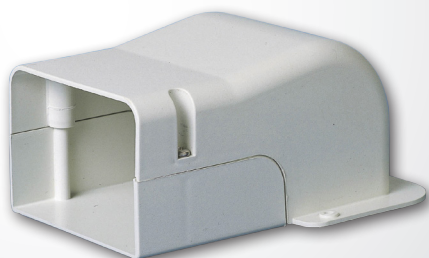
FLEX HOSE KIT



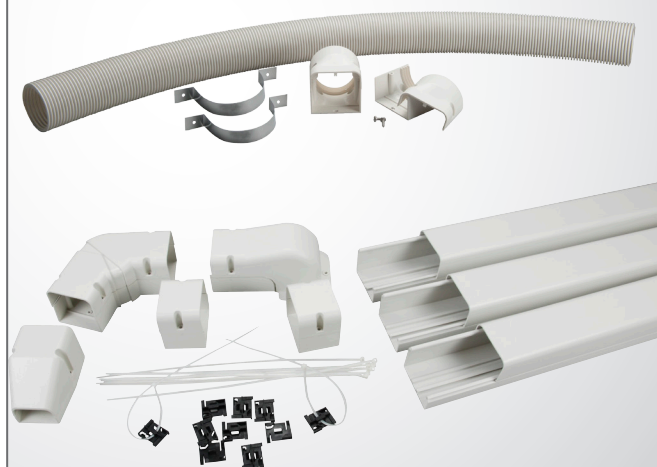
FLEX JOINT



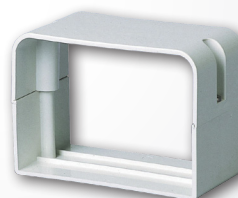
WALL COVER FOR INLET OR OUTLET



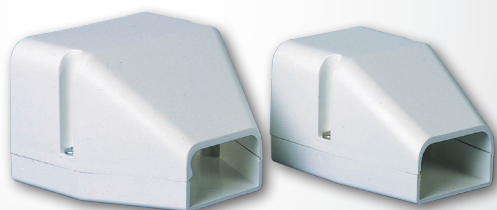
STARTER KIT XL



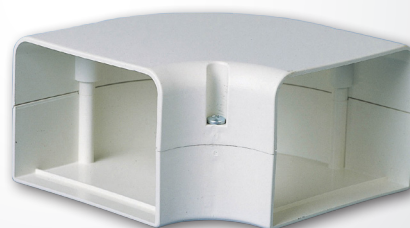
CONNECTION PIECE



DUCT END



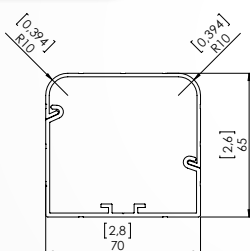
90° FLAT BEND



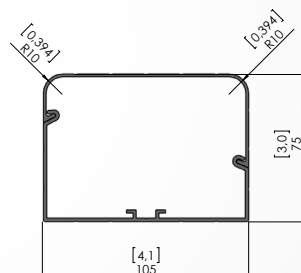
## TECHNICAL DRAWINGS

Dimensions in [brackets] are inch, other are mm.

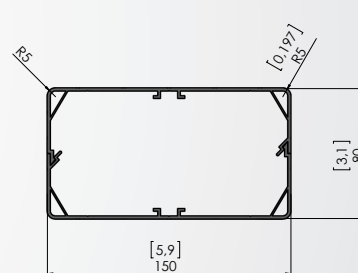
### DUCTS



SpeediDuct™ 70

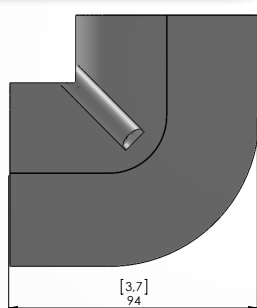


SpeediDuct™ 105

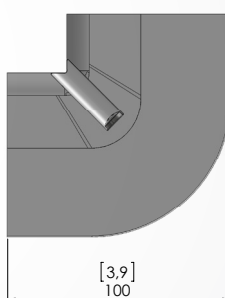


SpeediDuct™ 150

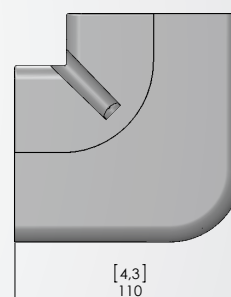
### ELBOW BEND 90°



SpeediDuct™ 70

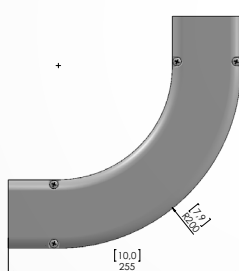


SpeediDuct™ 105

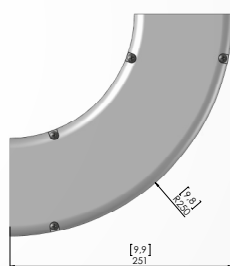


SpeediDuct™ 150

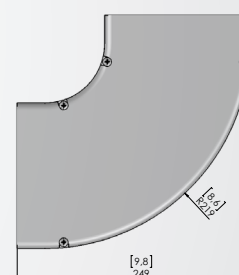
### LONG FLAT BEND



SpeediDuct™ 70

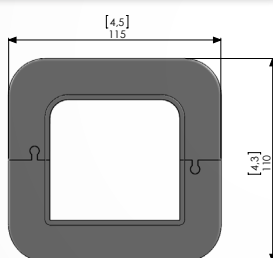


SpeediDuct™ 105

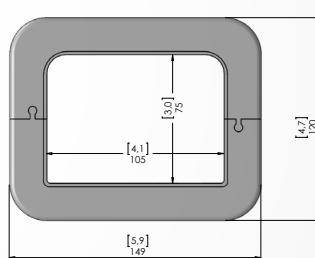


SpeediDuct™ 150

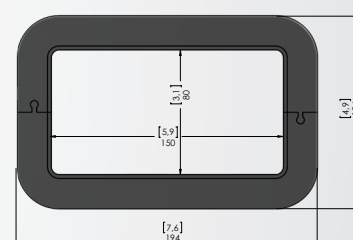
### WALL ROSETTE



SpeediDuct™ 70

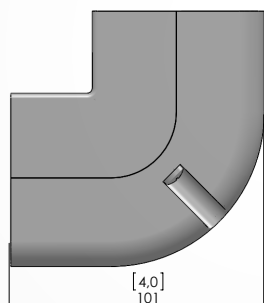


SpeediDuct™ 105

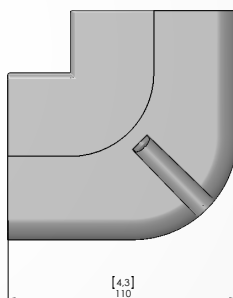


SpeediDuct™ 150

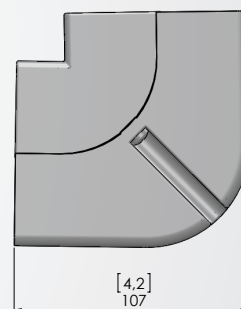
## ELBOW BEND IN



SpeediDuct™ 70

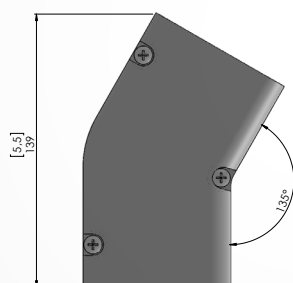


SpeediDuct™ 105

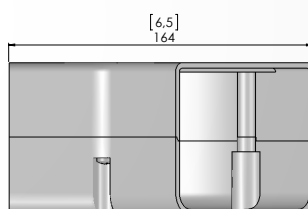


SpeediDuct™ 150

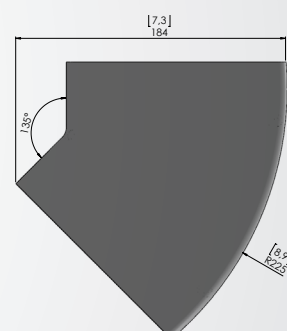
## FLAT BEND 45°



SpeediDuct™ 70

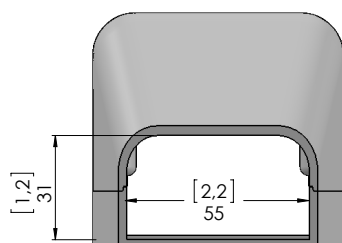


SpeediDuct™ 105

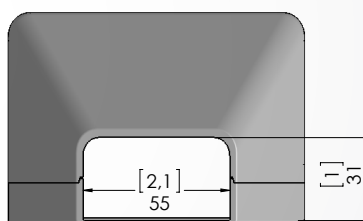


SpeediDuct™ 150

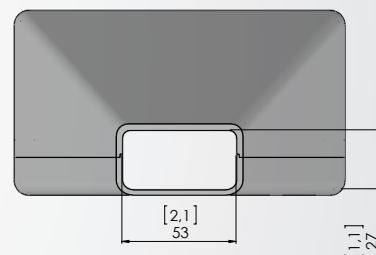
## DUCT END



SpeediDuct™ 70

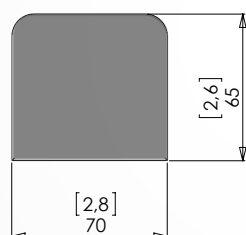


SpeediDuct™ 105

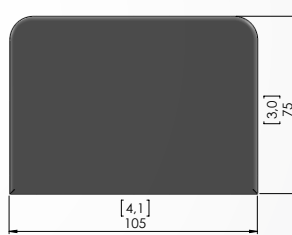


SpeediDuct™ 150

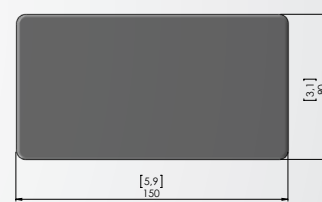
## DUCT CAP



SpeediDuct™ 70

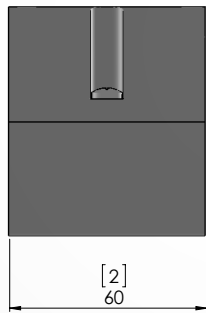


SpeediDuct™ 105

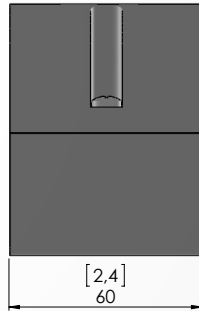


SpeediDuct™ 150

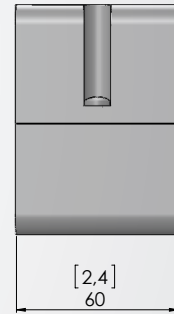
## CONNECTION PIECE



SpeediDuct™ 70

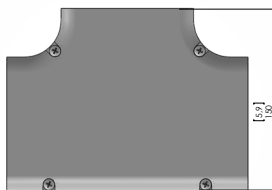


SpeediDuct™ 105

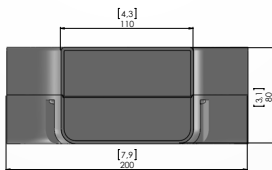


SpeediDuct™ 150

## T-JOINT

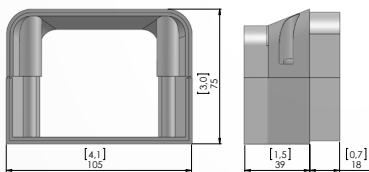


SpeediDuct™ 105

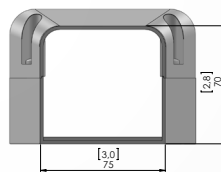


SpeediDuct™ 150

## REDUCER JOINT

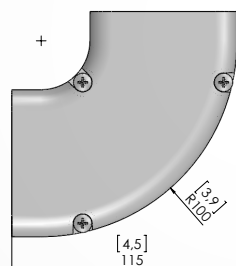


SpeediDuct™ 105

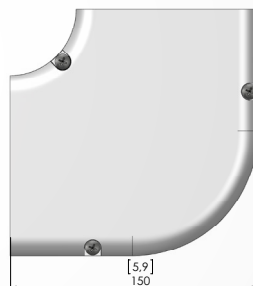


SpeediDuct™ 150

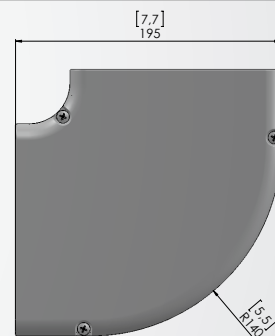
## FLAT BEND 90°



SpeediDuct™ 70



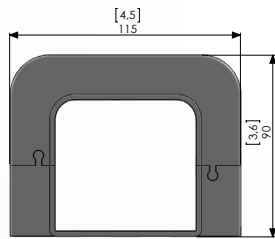
SpeediDuct™ 105



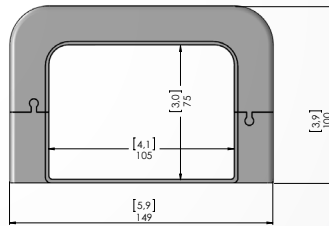
SpeediDuct™ 150



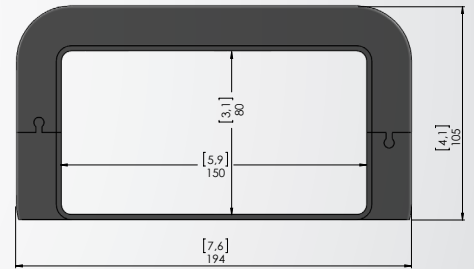
## FLAT ROSETTE



SpeediDuct™ 70

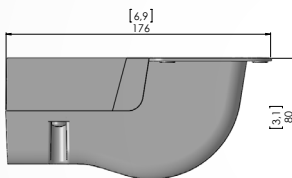


SpeediDuct™ 105

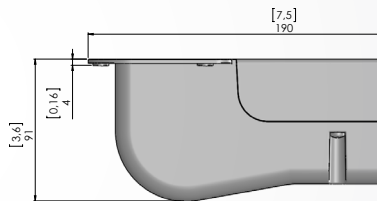


SpeediDuct™ 150

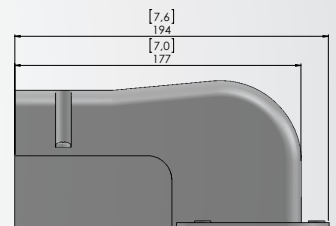
## WALL COVERS



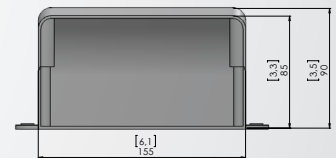
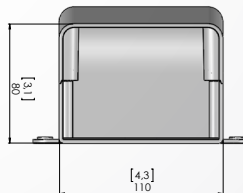
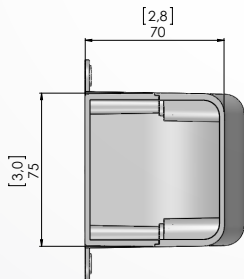
SpeediDuct™ 70



SpeediDuct™ 105

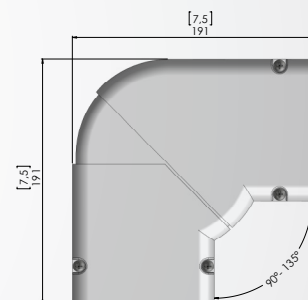
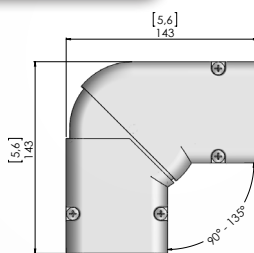


SpeediDuct™ 150



## ADJUSTABLE FLAT BEND

SpeediDuct™ 70



SpeediDuct™ 105

## PACKING INFORMATION

Description	Box		Pallet		
	Packing	Volume	Packing	Volume	Weight
SpeediDuct™ 70	12 m	205 x 18 x17 cm	432 lm	205 x 115 x 125 cm	436 Kg
SpeediDuct™ 105	12 m	205 x 24 x18 cm	288 lm	205 x 115 x 110 cm	366 Kg
SpeediDuct™ 150	10 m	205 x 25 x 20 cm	240 lm	205 x 110 x 120 cm	411 Kg

Description	SpeediDuct™ 70	SpeediDuct™ 105	SpeediDuct™ 150
SpeediDuct™ Wall Cover	10 pcs	10 pcs	10 pcs
SpeediDuct™ Flat Bend 90°	10 pcs	10 pcs	10 pcs
SpeediDuct™ 90° Elbow Bend	10 pcs	10 pcs	10 pcs
SpeediDuct™ 90° Long Flat Bend	10 pcs	10 pcs	10 pcs
SpeediDuct™ Connection Piece	10 pcs	10 pcs	10 pcs
SpeediDuct™ Reducer Joint	10 pcs	10 pcs	10 pcs
SpeediDuct™ Flat Rosette	10 pcs	10 pcs	10 pcs
SpeediDuct™ Elbow Bend Corner In 90°	10 pcs	10 pcs	10 pcs
SpeediDuct™ 45° Flat Bend	10 pcs	10 pcs	10 pcs
SpeediDuct™ Duct End	10 pcs	10 pcs	10 pcs
SpeediDuct™ Duct Cap	10 pcs	10 pcs	10 pcs
SpeediDuct™ T-Joint	10 pcs	10 pcs	10 pcs
SpeediDuct™ Wall Rosette	10 pcs	10 pcs	10 pcs
SpeediDuct™ Starter Kit	10 pcs	10 pcs	10 pcs
SpeediDuct™ Starter Kit XL	10 pcs	10 pcs	10 pcs
SpeediDuct™ Flex Hose Kit	10 pcs	10 pcs	10 pcs
Speediduct™ Adjustable Flat Bend	10 pcs	10 pcs	N/A
SpeediDuct™ Flex Joint	10 pcs	10 pcs	N/A

## DISCLAIMER

Castel Engineering, Rue de la Royenne 84, B-7700 Mouscron, Tel +32 (0) 56 33 68 40 – Fax. +32 (0) 56 33 78 10  
Copyright © 2015 Castel Engineering – All rights reserved.

Those who in any way utilize the product(s) are solely responsible for determining (a) the suitability of the product for the intended use, (b) the appropriate manner of processing and maintaining the product to ensure safety and quality and (c) chemical, physical and health effects related to those activities, (d) to inform themselves in order to be able to decide if specific tests are necessary for their intended use in respect to norms and regulations in application at the location of their intended use.

The qualified installer is supposed to have professional knowledge. Customers, installers and third parties are solely responsible for damages or failures in performance resulting from misuse, abuse, neglect or improper handling, transporting or storage.

Appropriate tools and materials for installation and for maintenance must be selected and used according to the professional know-how, in respect with the nature of our products and in compliance with all procedures and regulations in application at the location of installation.

All above parameters, factors, operations, regulations, compliances and procedures are totally beyond Castel Engineering sa and its Affiliates' control.

By selling this product Castel Engineering sa and its Affiliates acts in a simple sale – purchase transaction.

Castel Engineering and its Affiliates disclaim any and all responsibility and liability for the use of any such data, information and/or the relevant product.

All dimensions in this document are in mm unless otherwise specified.

Performance data given in this document is provided as a guide for the user to determining suitability. Dimensions and weights are nominal and are not to be used for manufacturing, even when tolerances are shown. Please read and understand this document before purchasing the product. Please contact your Castel Engineering representative if you have any questions or comments.

# Limited Warranty Declaration

*Applying to*

*Pre-release vEN.1.01*

- **SpeediDuct<sup>®</sup>** standard products<sup>1</sup>
- **Optimal Duct<sup>™</sup>** standard products<sup>1</sup>
- **Artica Duct<sup>™</sup>** standard products<sup>1</sup>

## 1. Scope

Under limited conditions (see further) and in conformity to our standards of quality, confirmation about the colour stability of our Products<sup>1</sup> when exposed to outdoor natural ultra-violet (=U.V.) rays.

## 2. Term of validity

This warranty covers the Products<sup>1</sup> during a period of 36 months (= hereafter the « Term » ) starting from their date of delivery by Castel Engineering sprl. Any claim related to colour (in)stability should be transmitted in writing within this period of time to enter in consideration for possible coverage by our limited warranty. See also point 4.2 hereafter.

## 3. Range of colour stability

Within the Term (as defined in point 2 above) Products<sup>1</sup>, used in conformity to their intended use and installed in a temperate climatic zone, in Europe, (see point 3.1) exposed to outdoor natural U.V. rays, should not show a colour variation out of a 1- 2 range on the grayscale according to ISO 105 A02 when compared to a non used and non exposed factory controle sample of the same product.

### 3.1 Temperate climatic zone

To be considered as a « temperate climatic zone », yearly exposure to solar energy on a horizontal surface should be lower than 5 GJ/m<sup>2</sup> and the average temperature, in the hottest month, should be lower than 22° Celsius.

## 4. Limited Warranty conditions

**4.1.** Covered Products<sup>1</sup> can only be sold to and must be installed, periodically inspected and maintained by professionals specialised in Heating, Ventilation, Air Conditioning and Refrigeration (= hereafter HVAC-R) .

**4.2** Till their installation, Products<sup>1</sup> must remain in their original packing, closed and sheltered from climatic conditions.

<sup>1</sup>Trunkings and injected fittings, made from PVC and ASA plastics, to cover insulated "split" air conditioning linesets

**4.3** To appeal for the warranty coverage, all claims must be filed within the Term in writing, dated, by the complainer, directly to its reseller or installer (as defined in point 4.1) who subsequently should transfer them to Castel Engineering sprl within the same Term.

At his charge he will deliver to Castel Engineering sprl, within the Term, at least one Product<sup>1</sup> part (=hereafter the « Sample » ) for which he considers that its colour stability, while installed and used as defined in paragraph 3 and 3.1 , is not conform.

Unless a claim is considered acceptable by Castel Engineering sprl while filed in conformity to the conditions exposed in this document, the complainer can be charged for the analysis of the Sample.

**4.4** After analysis of the Sample, Castel Engineering sprl will reject any claim if it observes deterioration, damage, contamination, colour variation or fading whose origin

- is caused by cleaning products non-conform for use in contact with the nature of the Products<sup>1</sup>,
- is caused by atmospheric pollution
- originates after entering in contact with or in proximity of anormal constraints such as other products of the same type and same material would show similar reactions, changes, deteriorations or colour variation or fading,

or when staining can be removed during a periodic maintenance with cleaners conform for use on the materials Products<sup>1</sup> are made from.

## 5. Disclaimer

Despite Castel Engineering's care and caution when conceiving and manufacturing its products , a slight variation in colour within the range defined in point 3., due to manufacturing processes or technological limits of the manufacturing equipment, can still be observed between products from different batches and are considered as conform to its standards of quality.

Those who in any way utilize the product(s) are solely responsible for determining (a) the suitability of the product for the intended use, (b) the appropriate manner of processing and maintaining the product to ensure safety and quality and (c) chemical, physical and health effects related to those activities, (d) to inform themselves in order to be able to decide if specific tests are necessary for their intended use in respect to norms and regulations in application at the location of their intended use.

The qualified HVAC-R installer is supposed to have professional knowledge about compliance with local regulations, safety factors, choice of the installation location and product orientation, the evaluation of the structure, composition and surface for Products<sup>1</sup> installation, the adequate

<sup>1</sup>Trunkings and injected fittings, made from PVC and ASA plastics, to cover insulated "split" air conditioning linesets



choice of fixing material (e.g. sealants, screws, etc) and procedures in respect with the known climatic conditions in use and during installation.

Appropriate tools and materials for installation and for periodic maintenance (at least every six months) must be selected and used according to the professional know-how, in respect with the nature of our products and in compliance with all procedures and regulations in application at the location of installation.

All above parameters, factors, operations, regulations, compliances and procedures are totally beyond Castel Engineering sprl, its Affiliates' and its Representatives' control.

By selling the Products<sup>1</sup> Castel Engineering sprl, its Affiliates' and its Representatives act in a simple sale – purchase transaction.

Castel Engineering sprl, its Affiliates' and its Representatives disclaim any and all responsibility and liability for the use of any such data, information and/or the relevant Products<sup>1</sup>.

All information contained in this document is not provided for manufacturing purposes. Modifications to, designing, conceiving and manufacturing or copying of the Products<sup>1</sup> is not authorised and is subject to Castel Engineering's written authorisation.

Customers, installers, users and third parties are sole responsible for deterioration, damages and failure in Products<sup>1</sup> performance when resulting from their inappropriate handling, their abuse, their negligence, from inappropriate conditions of transport, storage or maintenance or in the event of war, strikes, riots or Force Majeure.

Within the warranty limitations defined in this document, Castel Engineering sprl 's responsibility and liability is limited to free placing of the goods at the disposal of the buyer, in replacement to the goods recognized as being defective. All other damage or loss is completely beyond the scope of this warranty

General Conditions of Sales are available on: <http://www.castel-engineering.com>

## 6. Copyright

Copyright © 2019 Castel Engineering sprl, Rue de la Royenne 84, B-7700 Mouscron (Belgium)  
Tel +32 (0) 56 33 68 40, Fax + 32 (0) 56 33 78 10 [info@castel-engineering.com](mailto:info@castel-engineering.com)

All rights reserved, included those of translations.

This document cancels and replaces all previous documents about the same subject applying to the same Products<sup>1</sup>.

Castel Engineering sprl reserves the right to modify or update this document without prior notice. It is the customers' sole responsibility to inform themselves by sending a written request to obtain the latest version of this document.

<sup>1</sup>Trunkings and injected fittings, made from PVC and ASA plastics, to cover insulated "split" air conditioning linesets